

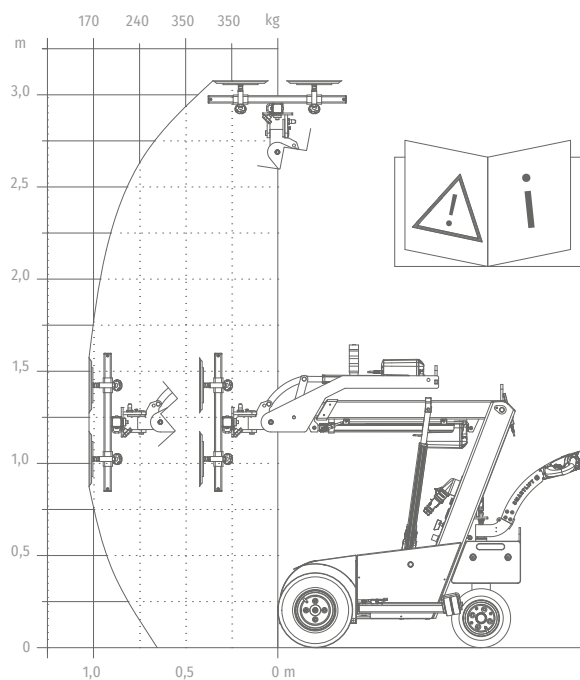
# SL309 OUTDOOR COMPACT

## HANDLING

### SL309 OUTDOOR COMPACT



HANDLING



## TECHNICAL DATA

DESCRIPTION	VALUE
Model	SL309 OUTDOOR COMPACT
Lifting cap. arm in/out	350/170 kg
Lifting height	3070 mm
Extension of arm	600 mm
Tip from horizontal	35° back / 135° fwd
Side shift	100 mm
Charging voltage	230 V / 110 V
Charging time	Approx. 10 hrs
Running period	Up to 10 hrs

DESCRIPTION	VALUE
Front-wheel drive	1500 W AC
Suction pads	4 x Ø300 mm
Width	820 mm
Curb weight	620 kg

Ultra compact design.

With folded handlebar and after removal of the vacuum cup frame total length is reduced to only 1.435mm.

Able to fit in a construction lift.

If narrow front wheels are installed (optional) width goes down to just 800mm, being able this way to go through a regular door.

## SL309 OUTDOOR COMPACT

